



The office will close *midday* Friday 22nd of December and reopen Tuesday 2nd of January. If urgent, please do not hesitate to contact Nick Cugura on 0417 334 206.

Menu Option Search

This new feature is available to the right of [Ask a Question]. On entering the name of the required option, all menu options that contain the name will be listed and can be accessed.

Ezy-Ezy Wines

File Edit View Tools Help Training Notes Ask a Question Menu Option Search

Option Code: Search Open

Option Name: Clear

Menu	Option Name	Option Code	Access
Cellar Operations History	Monthly Analysis Statistics	POR150	Yes
Payroll Operations	Superannuation Monthly Update	PYO19	Yes
Payroll Administration	Superannuation Monthly Update	PYO19	Yes
Payroll Operations Reports	Monthly Summary Report	PYR21	Yes
Payroll Operations Reports	Pay Type Monthly Summary	PYR22	Yes
Payroll Operations Reports	Monthly Super Variances	PYR24	Yes
Payroll Operations Reports	Monthly Summary by Dept/Group	PYR32	Yes
Payroll Operations Reports	Employee Monthly Summary	PYR35	Yes
Payroll Operations Reports	Employee Monthly Spreadsheet	PYR41	Yes
Payroll Operations Reports	GLPay Monthly Spreadsheet	PYR58	Yes
More Sales Analysis Reports	Sales Group Moving Monthly Avg	SAX51	Yes
More Sales Analysis Reports	Debtor/Stk Moving Monthly Avg	SAX67	Yes
Wine Club	Monthly Pack Commitment	SAZ54	Yes

EzyAccounts Pro

POS table map is now available.

Table Map View

Zone: CAFE

Name: CAFE

Table No	Seats	Status	Docket	Diners
T01	6	Seated	447	4
T02	6	Seated	453	2
T03	8	Seated	451	6
T04	10	Seated	450	4
T05	2	Seated	448	2
T06	2	Seated	454	2
T07	4	Available		
T08	4	Seated	456	
T09	6	Available		

Legend: Available, Seated, Reserved, Freehold, Close

Buttons: Merge Table, Unlink Table, Screen E&B, Mode

Foodstuffs EDI

Integration includes electronic sending and receiving of orders, shipping notices, STO by location and acknowledgments.



Mobile POSPDA

Payment tab has been introduced allowing for credit card surcharge and split payments.

Ezy Wines

New Sale Edit Sale Waiter Docket Kitchen Docket Table No C03 2 Exit

Header Place Order Line Items Payment

Table No: C03 Diners: 2 14/06/2017 10:57:18

Debtor: ZCUGUN01 Category: MSIL Rewards: 210.0 Docket No: 552

Sales Rep: LOZ Enter

Zone: CAFE Edit

Ezy Wines

New Sale Edit Sale Waiter Docket Kitchen Docket Table No C03 2 Exit

Header Place Order Line Items Payment

Red Wines 03 Red 6 Pack Seat No: 2

T-Shirt Hot Drinks Barnea Oil Meal Seq: 0

BHV Chardy Reserve Chardy Entree Mains

Dessert Vodka Voucher

Tips No of Tastings Freight

Item: Cappac, Soup, Burger, Reserve Shiraz

Ezy Wines

New Sale Edit Sale Waiter Docket Kitchen Docket Table No C03 2 Exit

Header Place Order Line Items Payment

Item	Qty	Unit	Price	Net	Seat	Seq
Cappaccino	1	CUP	3.00	3.00	1	1
Soup of the day	1	EACH	9.50	9.50	1	2
Cheese Burger	1	EACH	18.50	16.65	2	2
2013 Reserve Shiraz 12x750ml	1	B750	20.00	18.00	2	0

Ezy Wines

New Sale Edit Sale Waiter Docket Kitchen Docket Table No C03 2 Exit

Header Place Order Line Items Payment

VISA Surcharge: 1.30 %

Payment: 27.15

Surcharge: 0.35

Total Payment: 27.50

Apply Surcharge? Yes No

Ezy Wines

New Sale Edit Sale Waiter Docket Kitchen Docket Table No C03 2 Exit

Header Place Order Line Items Payment

Payment: EFT, VISA, Mastercard, Union, JCB, Split Bill

Pay Type: Tendered

Cash: 20.00

Visa: 27.50

Total Net: 47.50

Total Tendered: 47.50

Balance: 0.00

Change: 0.00

Void Pay Receipt

Table of Contents

New Menu Options	3	Sales	
		POSPDA Payment Tab	23
New System Parameters	3	POS Stock Kit Location Check	24
		Sales Invoice Email Subject Inc. Debtor Name	24
POS Tips		Import/Export POS Buttons	24
Receipt & Kitchen Printer Hierarchy	4	Nitro POS Interface (NZ)	25
Hide the Task Bar & Recording Tips	6	Sales Invoice HACCP Interface	26
Logo and Void Password	7	Sales R.W. Includes VAT and Excise (UK & EU)	26
Change Item & Open Till Draw Button	8	Restrict Sales Entry Taxes Access	27
Email Receipt & Sale Duration	New 9	POS Change Item	28
Customise Daily Buttons	10	M/Order: Packs, Generation To Calc. Disc	28
Record Text & Merge Tables	New 11	Change POS Button Number	28
Sales Rep POS ID	11	Additional Sales Reference	29
Record Club Member Details	12	Sequence Stock Allocation By Sales Rep	29
Record % or \$ Discount	New 12	Mail Order: Update, Complete Batch Only	29
Sales Rep Code Security & Keyboard	New 13	Foodstuff EDI (NZ)	30
Kitchen Docket Meal Sequence	New 14	Excise Register Location Selection	31
Mobile POSFDA	15	Spirit Credit Note Excise	31
		POS Zone Printer	31
Enhancements			
General			
Menu Option Search	16		
Specify Whether To Display Receipt Menu Options	16		
Accounts Payable			
Creditor Terms 8 Payments	17		
Creditors 120 & 150 Days Ageing	18		
Accounts Receivable			
No enhancements in this upgrade.			
Asset Register			
No enhancements in this upgrade.			
General Ledger			
GL Report Write Export Includes Sub Accounts	19		
Cash Journal GST Type Default	19		
Purchase Orders			
Purchase Order Entry Allows Update	20		
Payroll			
Email Payment Summary Employee Copy	21		
Stock Control			
Stock-Take Added To POSFDA	21		
Stock Movements Cost Reconciliation	22		
Bonded Warehouse Stock-Take GL Postings	22		

New Menu Options

Accounts Receivable

Accounts Receivable Reports, Credit Card Expiry Export

General Ledger

Bank Reconciliation, Export Bank Reconciliation

Sales

Sales Reference Maintenance, POS Meals Sequence

Sales Credit Notes, Sales C/Note Pickup Docket

Sales Administration, Export Sales Allocations (NZ)

Sales Administration, Export POS Buttons

Sales Administration, Import POS Buttons

UK & EU

Sales Report Writer: Cost Includes Exc.

Sales Report Writer: Cost Includes VAT

Sales Report Writer: Value Includes Exc.

Sales Report Writer: Value Includes VAT.

Stock Control

Stock Administration, Change Stock Unit Code

Stock Administration, Export Stock Item Balance

Stock Administration, Export Stock Location Details (NZ)

New System Parameters

Stationery: Credit Note Pickup Docket

Stationery: Credit Note P/Docker (Email)

Stock: Stock-Take Upd., Preload User Id

Stock: Export Stock Item Default Format

Acc/Pay: Use 120 Days Ageing

Acc/Pay: Use 150 Days Ageing

GL: Cash Payment, GST Default

GL: Cash Receipt, GST Default

P/Orders: Entry, Default WET Claimed

Sales: Entry, Additional Reference

Sales: Entry, Prompt For EDI Status

Mail Order: Update, Complete Batch Only

M/Order: WEB, Auto Set E-Statement

M/Order: WEB, FTP Address

M/Order: WEB, FTP Password

M/Order: WEB, FTP Username

C/Door: POS, Docket Print Order By Entry

C/Door: POS, Allow % Discount

C/Door: POS Constant Discount Button

C/Door: POS, Allow EFTPOS Offline Pay

C/Door: POS, Keyboard Auto Load

C/Door: POS, Stock Kits Component Loc.

C/Door: POS, Use Sales Rep ID

Sales Analysis Export: Cr Note Invoice

Sales Analysis Export: Cr Note User

Sales Analysis Export: Cr Note Inv User



On selecting a system parameter press the [F10] key or select the Help button, top right of screen, to display helpful information.

POS – RECEIPT PRINTER HIERARCHY

Accounts Receivable

Accounts Receivable Maintenance

Debtor Additional Details

Acc/Rec: Stationery Settings On Debtors

System parameter set to Yes. C/Door: POS, Printer.

Accounts Receivable

Accounts Receivable Maintenance

Debtor Groups

C/Door: POS, Printer.

System Administration

User Access

User Groups

Cellar Door Sales POS menu option.

System Administration

System Parameters

C/Door: POS, Printer.

System Administration

Menu Option Default & Reminder

Cellar Door Sales POS option.

System Administration

User Access

User Access Maintenance

POS user id.

System Administration

System Parameters

General: Default System Printer.

Ezy-Debtor Additional Details-Ezy Wines

Debtor: CDS, Alias: Cellar Door Sales - Bendigo

Stationery Parameter: C/Door: POS, Printer (Yes)



Ezy-Debtor Groups-Ezy Wines

Group: CD, Name: Cellar Door & Cafe - Bendigo

Stationery Parameter: C/Door: POS, Printer (Yes)



Ezy-User Groups-Ezy Wines

Group: CDS, Name: Cellar Doors Sales

Ezy Systems Menu Option: Cellar Door Sales POS



Ezy-System Parameters-Ezy Wines

Parameter Group: Sales

Parameter: C/Door: POS, Printer



Ezy-Menu Option Default & Reminder-Ezy Wines

Ezy Systems Menu Option: Sales

Cellar Door Sales POS



Ezy-User Access Maintenance-Ezy Wines

User Id: CDS, Name: Cellar Door Sales, Grp. Act Prt.: CDS Yes



Ezy-System Parameters-Ezy Wines

Parameter Group: General

Parameter: General: Default System Printer

Ezy-Debtor Additional Details-Ezy Wines

File Edit View Tools Help Training Notes Ask a Question Menu Option Search

Debtor CDS Alias
Name Cellar Door Sales - Bendigo

Stationery Parameter	Override Parameter	Current Setting	Current Version
<input type="checkbox"/> C/Door: POS, Kitchen/Bar Printer 1	No	CKIT	
<input type="checkbox"/> C/Door: POS, Kitchen/Bar Printer 2	No	CBAR	
<input type="checkbox"/> C/Door: POS, Kitchen/Bar Printer 3	No		
<input type="checkbox"/> C/Door: POS, Kitchen/Bar Printer 4	No		



Ezy-System Parameters-Ezy Wines

File Edit View Tools Help Training Notes Ask a Question Menu Option Search

Parameter Group
Sales

Parameter	Current Setting
<input type="checkbox"/> C/Door: POS, Kitchen/Bar Printer 1	CKIT
<input type="checkbox"/> C/Door: POS, Kitchen/Bar Printer 2	CBAR
<input type="checkbox"/> C/Door: POS, Kitchen/Bar Printer 3	
<input type="checkbox"/> C/Door: POS, Kitchen/Bar Printer 4	



Ezy-Stock Groups-Ezy Wines

File Edit View Tools Help Training Notes Ask a Question Menu Option Search

Stock Groups

Group	Name	POS Access	Active
FOOD	Meals in Cafe/Restaurant	Yes	Yes
VINTAGE		Use Zone Printer	No
CATEGORY		POS Kitchen/Bar Printer	
REGION		CKIT	Yes
VARIETY		CBAR	No
ALC %			
WEB			

Ezy-Non-Stock Items-Ezy Wines

File Edit View Tools Help Training Notes Ask a Question Menu Option Search

Non-Stock Items

Class	CAFEMEALS001		
Name	Cheese Burger		
Unit	EACH	POS Kitchen/Bar Printer	
Discount	Yes	CKIT	Yes
GL A/C	10-040 Sales - General/Merc	CBAR	No
Price	18.5000		



Ezy-System Parameters-Ezy Wines

File Edit View Tools Help Training Notes Ask a Question Menu Option Search

Parameter Group
Sales

Parameter	Current Setting
<input type="checkbox"/> C/Door: POS, Kitchen Docket Printer	POS1

POS - KITCHEN PRINTER HIERARCHY

Accounts Receivable

Accounts Receivable Maintenance

Debtor Additional Details

Override Parameter

Select Yes to override the printers specified against the system parameters.

System Administration

System Parameters

C/Door: POS, Kitchen/Bar Printer 1..12.

Stock Control

Stock Reference Maintenance

Stock Groups

Specify which printer is to be used for each stock group *or* specify whether the printer recorded against the Sales Reference Maintenance, POS Zones option is to be used.

Sales

Sales Reference Maintenance

Non-Stock Items

Specify which printer is to be used for each non-stock item.

System Administration

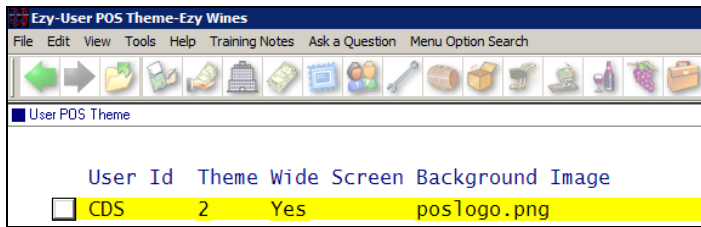
System Parameters

C/Door: POS, Kitchen Docket Printer

Specify the kitchen docket printer.

C/Door: POS, Kitchen/Bar Print Text

Specify the printer to be used for text recorded in POS which is generally left blank.



POS - LOGO

System Administration

System Parameters

User Access

User POS Themes

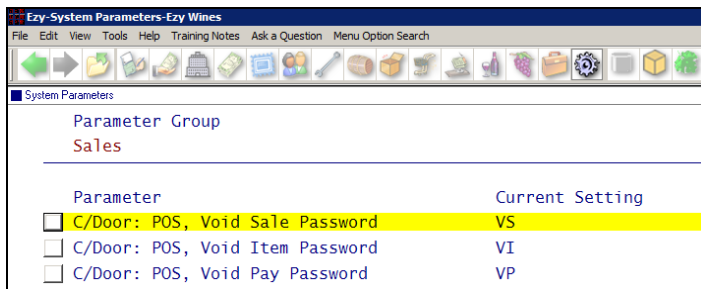
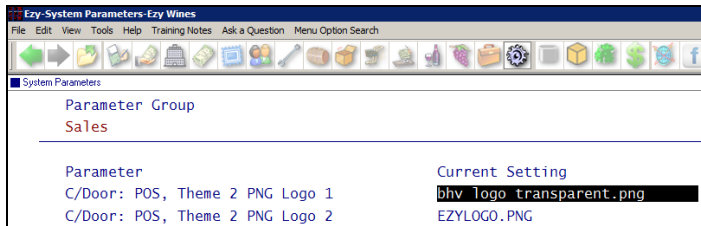
You can display your logo in the bottom right corner.

You can specify a logo against the cellar door user id using the User POS Themes option and/or the following system parameters;

C/Door: POS, Theme 2 PNG Logo 1

C/Door: POS, Theme 2 PNG Logo 2.

The stationery designer can be utilised to display your company logo on the docket.



POS – VOID PASSWORD

System Administration

System Parameters

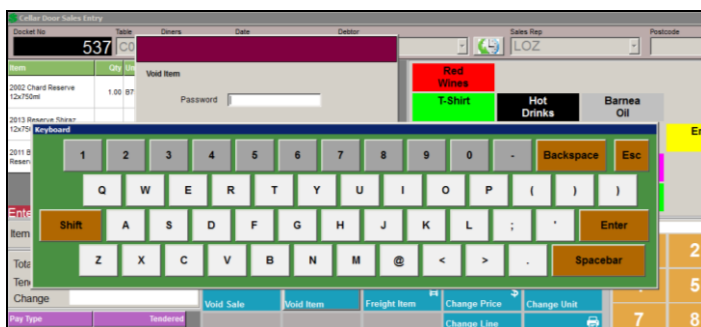
C/Door: POS, Void Sale Password

C/Door: POS, Void Item Password

C/Door: POS, Void Pay Password

A password can be recorded against each of these system parameters.

POS will prompt for a password and display a keypad when any of the void buttons is selected.



Ezy-POS Buttons-Ezy Wines

File Edit View Tools Help Training Notes Ask a Question Menu Option Search

POS Buttons SAD20

Button Type	Label	Label2	Code	Unit	Colour	Size	Sales Rep
1 Grp	Red	Wines			Red	12	CD
5 Stk	03 Red	6 Pack	99MIXPAC7-1	6750	Blue	12	CD
6 Non	T-Shirt		T-SHIRT	EACH	Green	12	CD
7 Grp	Hot	Drinks			Black	12	CD
8 Stk	Barnea	Oil	OILEV07	8700	Gray	12	CD
11 Stk	BHV	Chardy	02CHARES7	8750	White	12	CD
12 Stk	Reserve	Chardy	03CHRES7	8750	White	12	CD
14 Grp	Entree				Yellow	12	CD
15 Grp	Mains				Yellow	12	CD
16 Grp	Dessert				Yellow	12	CD
18 Stk	Vodka		VOD70037	8700	Magenta	12	CD
20 Non	Voucher		COUPON/VOUCH	\$	Cyan	12	CD
21 Non	Tips		POSTIPS	EACH	Cyan	12	CD
23 Non	No of	Tastings	TASTINGS	EACH	Green	12	CD
25 Non	Freight		ZFREIGHT-VIC	CASE	Blue	12	CD

Touch Screen Insert Modify Delete Browse Report Copy

Ezy-POS Buttons-Ezy Wines

File Edit View Tools Help Training Notes Ask a Question Menu Option Search

POS Buttons

Sales Rep Copy From CD Copy To Sales Rep

Ezy-POS Buttons-Ezy Wines

File Edit View Tools Help Training Notes Ask a Question Menu Option Search

POS Buttons

Sales Rep Copy From CD Copy To Rep Group

Ezy-POS Buttons-Ezy Wines

File Edit View Tools Help Training Notes Ask a Question Menu Option Search

POS Buttons SAD20

Button Type	Label	Label2	Code	Unit	Colour	Size	Sales Rep
<input type="checkbox"/>	23 Non	No of	Tastings	TASTINGS	EACH	Green	12 CD
<input type="checkbox"/>	25 Non	Freight		ZFREIGHT-VIC	CASE	Blue	12 CD
<input checked="" type="checkbox"/>	1 Grp	Red	Wines		Red	12	POS-SUN
<input type="checkbox"/>	5 Stk	03 Red	6 Pack	99MIXPAC7-1	6750	Blue	12 POS-SUN
<input type="checkbox"/>	6 Non	T-Shirt		T-SHIRT	EACH	Green	12 POS-SUN
<input type="checkbox"/>	7 Grp	Hot	Drinks		Black	12	POS-SUN
<input type="checkbox"/>	8 Stk	Barnea	Oil	OILEV07	8700	Gray	12 POS-SUN
<input type="checkbox"/>	11 Stk	BHV	Chardy	02CHARES7	8750	White	12 POS-SUN
<input type="checkbox"/>	12 Stk	Reserve	Chardy	03CHRES7	8750	White	12 POS-SUN
<input type="checkbox"/>	14 Grp	Entree			Yellow	12	POS-SUN
<input type="checkbox"/>	15 Grp	Mains			Yellow	12	POS-SUN
<input type="checkbox"/>	16 Grp	Dessert			Yellow	12	POS-SUN
<input type="checkbox"/>	18 Stk	Vodka		VOD70037	8700	Magenta	12 POS-SUN
<input type="checkbox"/>	20 Non	Voucher		COUPON/VOUCH	\$	Cyan	12 POS-SUN
<input type="checkbox"/>	21 Non	Tips		POSTIPS	EACH	Cyan	12 POS-SUN
<input type="checkbox"/>	23 Non	No of	Tastings	TASTINGS	EACH	Green	12 POS-SUN
<input type="checkbox"/>	25 Non	Freight		ZFREIGHT-VIC	CASE	Blue	12 POS-SUN

Ezy Wines

Collar Door Sales Entry

Doc Ref: 553 C02 4 Date: 15/06/2017 Debtor: CDS Sales Rep: POS-SUN

Sales Rep

POS-SUN

POS – CUSTOMISE DAILY BUTTONS

POS buttons can be customised for each day and every type of function.

- Sunday 3 course meals
- Prices to include weekend surcharge
- Customise function options

C/Door: POS, Link Buttons To Sales Rep

Set this system parameter to Yes.

Sales

Sales Reference Maintenance

Sales Reps

Enter a sales rep for each day.

Sales

Sales Reference Maintenance

POS Buttons

Utilise the [Copy] button to copy the buttons from one day to another and then customise the buttons for each day as required.

Copy To

- **Sales Rep**
Buttons will be created for the sales rep specified
- **Rep Group**
Buttons will be created for each sales rep in the sale rep group!

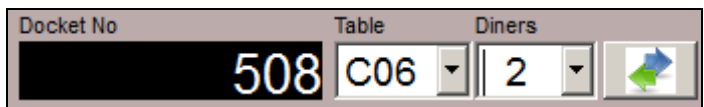
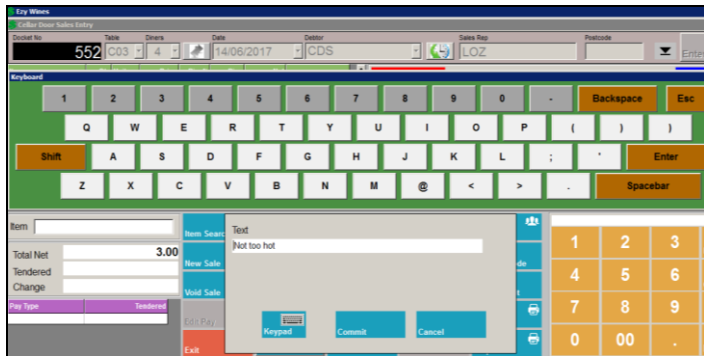
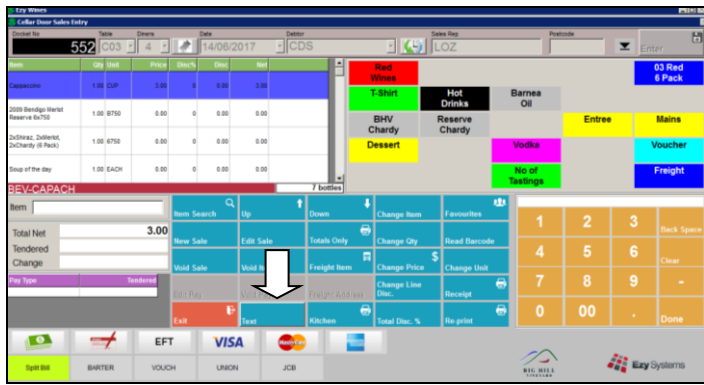
This will ensure that the correct options and prices are used for each day.

Note

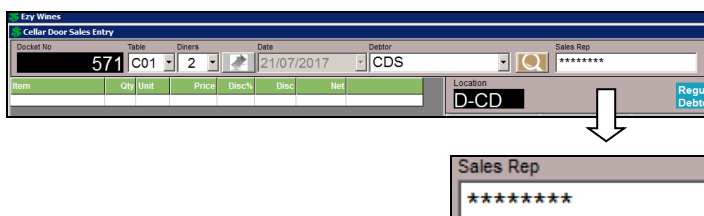
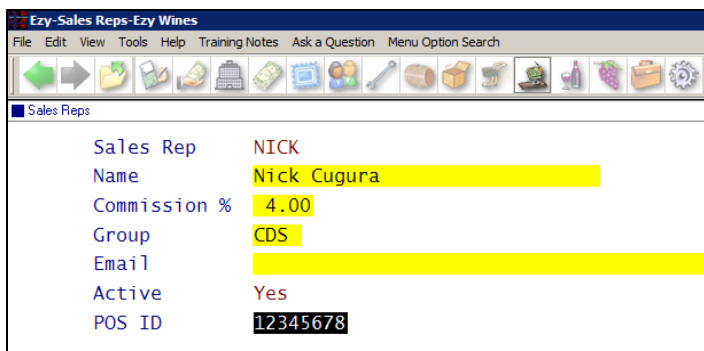
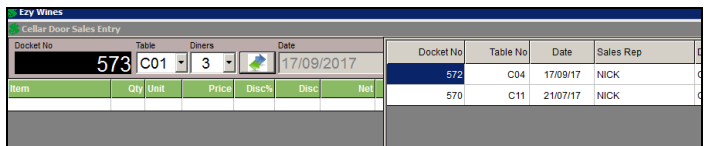
Button number can be changed!

POS

Select the appropriate sales rep (*ie. day*).



Move Docket

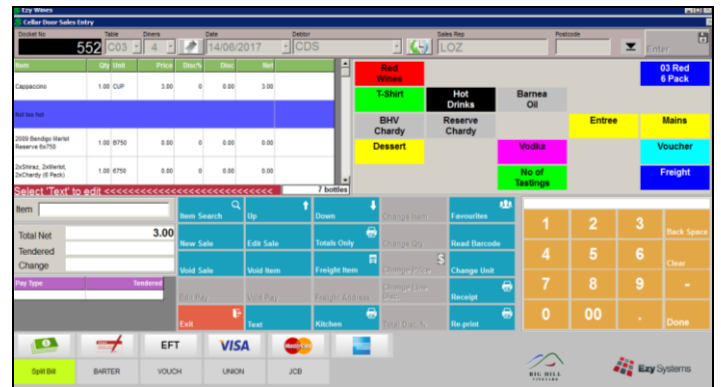


POS – RECORD TEXT

You can insert text anywhere on the docket.

Highlight the entry where the text is to be inserted.

It will be inserted *after* the line highlighted.



POS – MERGE TABLES

The table recorded against a docket can be changed at any time provided there isn't an open docket for the new table number.

If you want to merge 2 open dockets, select the **Move Docket** button.

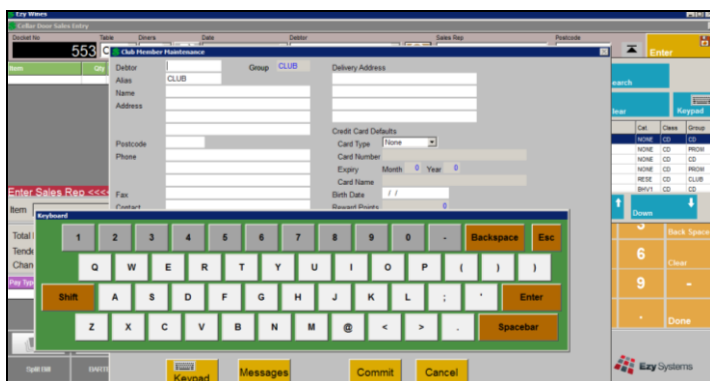
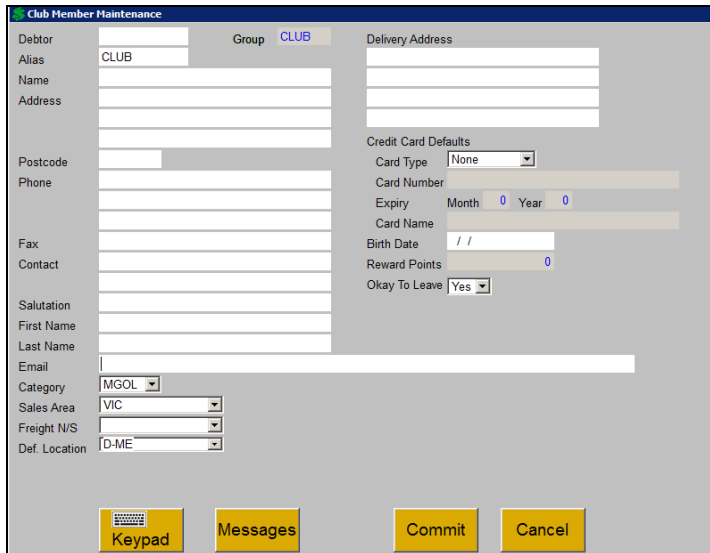
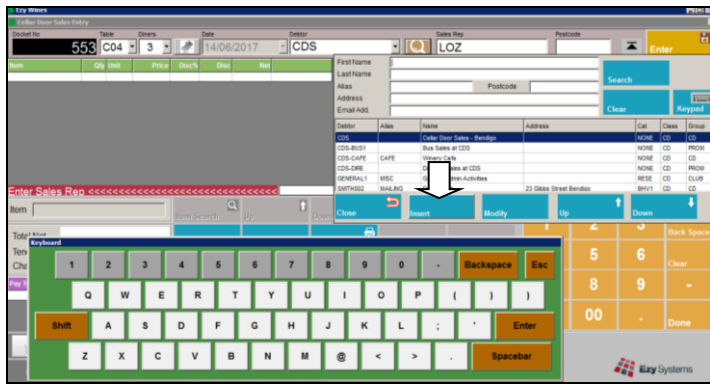
POS – SALES REP POS ID

Sales

*Sales Reference
Sales Reps*

Set the following system parameters as shown.

*C/Door: POS, Use Sales Rep ID = Yes
C/Door: POS, Always Clear Sales Rep = Yes
C/Door: Entry, Use User Id – Not Rep = No
C/Door: POS, Scan Sales Rep Code = No.*



POS – RECORD CLUB MEMBER DETAILS



This button can be used to find, insert and modify wine club members.

M/Order: Default Stock Location

This system parameter is used as the default location when inserting a Debtor.

On displaying the keypad, use the mouse to move the keypad around the screen.

POS – RECORD % OR \$ DISCOUNT

C/Door: POS, Allow \$ Discount

This system parameter determines whether a \$ discount can also be recorded.

Cellar Door Sales Entry						
Docket No	Table	Diners	Date			
562	C02	1	09/07/2017			
Item	Qty	Unit	Price	Disc%	Disc	Net
Extra Virgin Olive Oil 700ml	1.00	B700	22.00	36.36	8.00	14.00

Ezy-System Parameters-Ezy Wines

File Edit View Tools Help Training Notes Ask a Question Menu Option Search

System Parameters

Parameter Group
Sales

Parameter	Current Setting
<input type="checkbox"/> C/Door: POS, Scan Debtor Code	No
<input type="checkbox"/> C/Door: POS, Scan Sales Rep Code	Yes

Ezy-System Parameters-Ezy Wines

File Edit View Tools Help Training Notes Ask a Question Menu Option Search

System Parameters

Parameter Group
Sales

Parameter	Current Setting
<input type="checkbox"/> C/Door: POS, Always Clear Sales Rep	Yes

Ezy-Change Sales Rep Code-Ezy Wines

File Edit View Tools Help Training Notes Ask a Question Menu Option Search

Change Sales Rep Code

Sales Rep	NICK	Change To	4022
Name	Nick Cugura		Nick Cugura

Ezy Wines

Cellar Door Sales Entry

Doc Ref No: 571 Table: C01 2 Date: 21/07/2017 Debtor: CDS Sales Rep: *****

Item Qty Unit Price Disc% Disc Net Location: D-CD Regal Debit

Sales Rep: *****

Ezy Wines

Cellar Door Sales Entry

Doc Ref No: 508 Table: C08 2 Date: 01/08/2016 Debtor: CDS Sales Rep: 4022

Item Qty Unit Price Disc% Disc Net

Soup of the day 1.00 EACH 12.00 0 0.00 12.00

Chicken Caesar Salad 1.00 EACH 14.00 0 0.00 14.00

2003 Chardonnay Reserve 750ml 1.00 BTL 16.67 0 0.00 16.67

2004 Chardonnay Reserve 750ml 1.00 BTL 16.67 0 0.00 16.67

Enter Product Barcode

Item Search

Keypad

Enter Product Barcode

Item

Item Search

Keypad

3

POS - SALES REP CODE SECURITY

System Administration System Parameters

C/Door: Scan Sales Rep Code
C/Door: POS, Always Clear Sales Rep
 Set these 2 system parameter to Yes.

If you have already setup sales reps for the cellar door sales staff, utilise the Sales Administration, Change Sales Rep Code option to change the rep names to a unique number.

POS will not display a list of sales reps! Instead, the staff need to enter their POS access number.

Sales Reference Maintenance Sales Reps

Ezy-Sales Reps-Ezy Wines

File Edit View Tools Help Training Notes Ask a Question Menu Option Search

Sales Reps

Sales Rep	NICK
Name	Nick Cugura
Commission %	4.00
Group	CDS
Email	
Active	Yes
POS ID	12345678

POS – KEYBOARD

C/Door: POS, Keyboard Auto Load
C/Door: POS, Item Search Touch Keyboard

These system parameters determine whether the keyboard is automatically displayed.

Ezy-POS Meals Sequence-Ezy Wines

File Edit View Tools Help Training Notes Ask a Question Menu Option Search

POS Meals Sequence

Button	Type	Label	Label2	Code	Sequence	Sales Rep
15	Grp	Mains				CD
1	Non	Burger		CAFEMEALS001	2	
2	Non	Chicken Caesar		CAFEMEALS002	2	

POS – KITCHEN DOCKET MEAL SEQUENCE

Sales

Sales Reference Maintenance POS Meals Sequence

Meal options may appear on the main or sub menu.

Sequence

Specify the sequence number, 0 to 9.

System Administration

Stationery Designer

The stationery designer will allow you to specify whether the meal sequence is to appear on the kitchen docket.

Ezy-Stationery Designer-Ezy Wines

File Edit View Tools Help Training Notes Ask a Question Menu Option Search

Stationery Designer

Cellar Door Kitchen Dockets (DEFAULT)

Stock Detail

Line Type	Field/"Text"
StockDesc1	Meal Sequence
StockDesc1	Stock Item Description 1
StockDesc1	Stock Item Unit
StockDesc1	Quantity Ordered
StockDesc2	Stock Item Description 2
Non-Stock	Meal Sequence
Non-Stock	Non-Stock Description
Non-Stock	Non-Stock Unit
Non-Stock	Quantity Ordered
Text	Text Line
Option	Option Description
Sequence	

Fields:

Sequence No	[1]
Sequence No With 'Sequence'	[30]
Sequence No With Line Break	[30]

Highlight Entry, Press [Enter] To Select Insert

NICK | System Administration - Stationery Designer

KITCHEN DOCKET, 567

TABLE C05
TIME 11:56:48
WAITER Malissa Smith

Course	DESCRIPTION	UNIT	QUANTITY
2	Cheese Burger Vegetables Fries	EACH	1
3	Apple Pie Wipped Cream	EACH	1
3	Apple Pie Ice Cream	EACH	1

Ezy Wines POS - MOBILE PDA

Table No C03 2 Exit

Header Place Order Line Items Payment

Table No C03 Diners 2 14/06/2017 10:57:18

Debtor ZCUGUN01 Category MSIL Rewards 210.0 Docket No 552

Nick Cugura Enter

Sales Rep LOZ Edit

Zone CAFE

Ezy Wines POS - MOBILE PDA

Table No C03 2 Exit

Header Place Order Line Items Payment

Red Wines 03 Red 6 Pack

T-Shirt Hot Drinks Barnea Oil

BHV Chardy Reserve Chardy Entree Mains

Dessert Vodka Voucher

Tips No of Tastings Freight

Seat No 2

Meal Seq 0

Item

Cappac.

Soup

Burger

Reserve Shiraz

Ezy Wines POS - MOBILE PDA

Table No C03 2 Exit

Header Place Order Line Items Payment

Edit Qty Seat Seq Void Item Options Text

Item	Qty	Unit	Price	Net	Seat	Seq
Cappuccino	1	CUP	3.00	3.00	1	1
Soup of the day	1	EACH	9.50	9.50	1	2
Cheese Burger	1	EACH	18.50	16.65	2	2
2013 Reserve Shiraz 12x750ml	1	B750	20.00	18.00	2	0

Ezy Wines POS - MOBILE PDA

Table No C03 2 Exit

Header Place Order Line Items Payment

VISA Surcharge 1.30 %

Payment 27.15

Surcharge 0.35

Total Payment 27.50

Apply Surcharge ? Yes No

47.15

20.00

27.15

0.00

POS - MOBILE PDA

Payment tab has been introduced allowing for credit card surcharge and split payments.

Ezy Wines POS - MOBILE PDA

Table No C03 2 Exit

Header Place Order Line Items Payment

Pay Type Tendered Total Net 47.50

Cash 20.00 Total Tendered 47.50

Visa 27.50 Balance 0.00

Change 0.00

Void Pay Receipt

Samsung Table 7"

The desktop shortcut to run POS PDA needs to include the screen resolution dimensions.

The width and height of a Samsung tablet 7" is 2.9 and 2.5 respectively.

POS PDA - Copy

Target type: Application

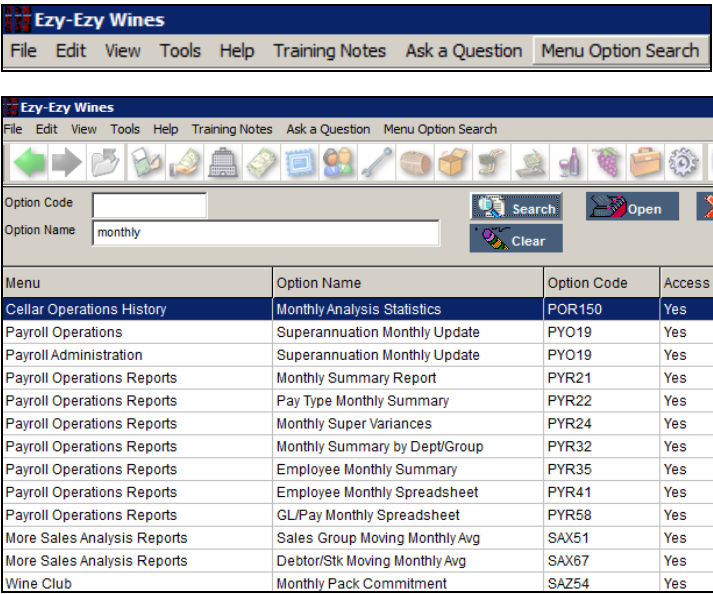
Target location: Vfp90

Target: C:\Vfp90\wfp.exe -t ..\testprg\ezypospda 2.9, 2.5

General

Menu Option Search

This new feature is available to the right of [Ask a Question]. On entering the name of the required option, all menu options that contain the name specified will be listed and you can then click on the required option to access it.

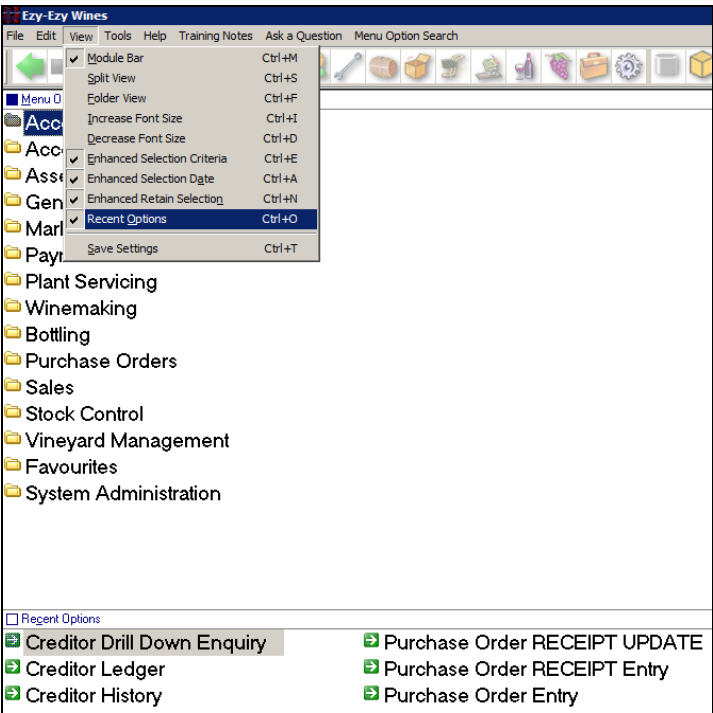


Benefit

- Search for relevant options
- Save time.

Specify Whether To Display Recent Menu Options

If you want to hide the recent menu options displayed at the bottom of the screen simply select the [View] button top left of screen, untick *Recent Options* and don't forget to click on save settings.



Benefit

- Each user can specify whether they want the last 8 menu options accessed stored on logging out.

Accounts Payable (Cont'd)


Creditors 120 & 150 Days Ageing

The following system parameters have been introduced defaulting to No.

Acc/Pay: Use 120 Days Ageing

Acc/Pay: Use 150 Days Ageing


NICK
APR05


BIG HILL
VINEYARD
Creditor Trial Balance

13:08 15/09/2017
Page 1 of 1

Sequence : Creditor

Selection Criteria From To
Creditor EZYSYS01 EZYSYS01




Creditor	Alias	Name/Phone/Contact	Last Payment	Total	Current	30 Days	60 Days	90 Days	120 Days	150 Days
EZYSYS01	MISC	Ezy Systems 03 5444 4132 Peter Ellis (BPT)	06/03/15 227.60	11320.78	8600.00	0.00	0.00	789.00	792.78	1139.00
Grand Totals (1 Creditors)				11320.78	8600.00	0.00	0.00	789.00	792.78	1139.00
					75.97%	0.00%	0.00%	6.97%	7.00%	10.06%

End of Report

Ezy-Creditor Ageing Maintenance-Ezy Wines

File Edit View Tools Help Training Notes Ask a Question Menu Option Search



Creditor Ageing Maintenance

Creditor	Current	30 Days	60 Days	90 Days	120 Days	150 Days
EZYSYS01	8600.00	0.00	0.00	789.00	792.78	1139.00

Date	Type	Ref	Description	Amount	Period
20/10/2015	Inv	SEMINAR	Wine Club Seminar	350.00	150 Days
20/10/2015	Inv	INV#112	P/Order 153 Receival	800.00	Current
20/10/2015	Inv	INV#112	P/Order 153 Receival	800.00	Current
20/10/2015	Inv	INV#112	P/Order 153 Receival	800.00	Current

Benefit

- Provide better ageing reporting.

- A/P Administration
 - Creditor End of Month
 - Import Creditor Transactions
 - Creditor Ageing Maintenance
 - Export Creditor Trial Balance
 - Export Creditor TB by Due Date
 - Export Creditor Ledger
 - Creditor Company Consolidation
- Creditor Consolidation Summary
- Creditor Consolidation Update
- Creditor Consolidation Export
 - A/P Payments
 - Creditor Payment Listing
 - Creditor Payment Update
 - Accounts Payable Reports
 - Creditor Trial Balance
 - Creditor Detail Trial Balance
 - Creditor Ledger Report
 - Creditor Drill Down Enquiry
 - A/P Invoices & Adjustments
 - A/P invoice & Adjust. Entry
 - A/P invoice & Adjust. Listing
 - A/P invoice & Adjust. Update
 - General Ledger Reports
 - Financial Position

Accounts Receivable

No enhancements in this upgrade.

Asset Register

No enhancements in this upgrade.

General Ledger

GL Report Writer Export Includes Sub Accounts

‘Export Sub Accounts’ prompt has been added to the selection criteria.

STOH Cost vs GL STOH Balances

File Edit View Tools Help Training Notes Ask a Question Menu Option Search

GL Report Export (Styles)

Year: 2005
Month: September
Report Style: STD QTR
Export Sub Accounts: Yes

Benefit

- Ability to check the accounts that make a total.

GL Report Writer
GL Report Export (Styles)

Cash Journal GST Type Default

The following system parameter have been introduced.

GL: Cash Receipts, GST Default

GL: Cash Payments, GST Default.

Benefit

- Ensure that the correct GST type is selected.

Cash Payments Journal
Cash Payments Journal Entry
Cash Receipts Journal
Cash Receipts Journal Entry

Ezy-Cash Payments Journal Entry - Ezy Wines

File Edit View Tools Help Training Notes Ask a Question Menu Option Search

Cash Payments Journal Entry

Batch No: 9 Batch Total: 2.00 Batch Records: 0
Last Modified: NICK Actual Total: 30.00 Actual Records: 1

Date: 21/09/2017
Description: 2 bags of cement Ref:
Cash Amount: 30.00
Cheque Amount: 0.00
GL Bank A/C: 60-010 Cash At Bank Bal: 847972.95DR
Month: Sep GL GST A/C: 60-080 GST: 0.00
Year: 2004/2005 Unalloc: 30.00

GL A/C	Amount	GST Acq.	Project
30-125	30.00	Other - 10.00%	
2 bags of cement			

Select GST Acquisition Type [SCROLL LIST] Insert

Purchase Orders

Purchase Order Entry Allows Update

When system parameter “P/Orders: Entry, Allow Receipting” is set to Yes, you will be prompted to receive the order.

Ezy-Purchase Order Entry-Ezy Wines

File Edit View Tools Help Training Notes Ask a Question Menu Option Search

Order No 169 GST Inc. No
Creditor [F5] BENDCH01 Bendigo Chemical Supplies GST \$ 86.00
Order Date 13/07/2017 03 5441 2044 Total \$ 946.00

Type Code	Quantity	Unit	Locn	Unit Cost	Required	GL A/C	Total
Stk BOBURGSTD	1000.0000	EACH	WWC1	0.7800	27/07/2017	60-062	
10			Standard Burgundy 750ml Bottle			GST Other - 10.00%	780.00
Non FREIGHT	1.0000	PAL		80.0000	23/07/2017	30-110	
9999			Freight			GST Other - 10.00%	80.00

Receive Purchase Order ?

Provided nothing has been already receipted, you will then be prompted as to whether you want to receive the entire order.

Ezy-Purchase Order RECEIPT Entry-Ezy Wines

File Edit View Tools Help Training Notes Ask a Question Menu Option Search

Order No 169 GST (Exc) \$ 0.00
Creditor [F5] BENDCH01 Bendigo Chemical Supplies Ordered \$ 946.00
Order Date 13/07/2017 Created By NICK Received \$ 0.00
Pay Method Accounts Payable

Item	Description	Unit	Quantity
BOBURGSTD	Standard Burgundy 750ml Bottle	EACH	1000.0000
FREIGHT	Freight	PAL	1.0000

Commit Receipt of ENTIRE Order ?

The items on the order are displayed!

Benefit

- Save a lot of time!

P/Orders Operations Purchase Order Entry

Ezy-Purchase Order Entry-Ezy Wines

File Edit View Tools Help Training Notes Ask a Question Menu Option Search

Order No 169 GST (Exc) \$ 0.00
Creditor [F5] BENDCH01 Bendigo Chemical Supplies Ordered \$ 946.00
Order Date 13/07/2017 Created By NICK Received \$ 0.00
Pay Method Accounts Payable
Received 13/07/2017
Delivery Ref MCPHE#114
Invoice No BC#133
Invoice Date 13/07/2017
Due Date 30/08/2017
GL Account
Project

Update Purchase Order Receipt ?

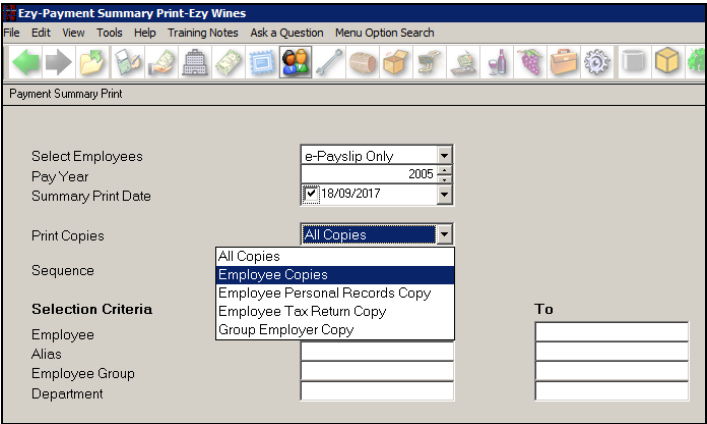
If you receipt the entire order, you will be prompted for delivery details.

If you have access to the Purchase Order Receipt Update option, you will then be prompted to UPDATE the order.

Payroll

Email Payment Summary Employee Copy

‘Employee Copies’ has been added to the ‘Print Copies’ options.



Benefit

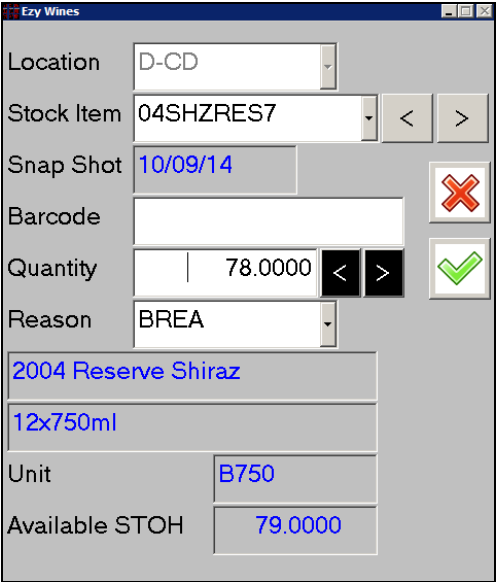
- Bulk email personal copy to all employees.

Payroll Operations Reports
Payment Summary Print

Stock Control

Stock-Take Added To POSPDA

Stock Take Entry has been added to the PDA menu.



Benefit

- If you have a wireless network a device such as an iPhone or PDA can be used to record stock-take
- PDA with scanner could be utilised if stock have barcodes
- Save time and minimise errors.

EZYPDA


Stock Control (Cont'd)

Stock Movements Cost Reconciliation

‘Reconcile Cost’ was added to the Format options, displaying the following new columns

- Stock on hand
- Average cost
- Totals cost.

NICK
STR21


BIG HILL
VINEYARD

10:15 29/08/2017
Page 1 of 1

Sequence : Stock Item

Selection Criteria From To
Stock Item 04SHZRES7 04SHZRES7
Date 01/01/2016 31/12/9999

Stock Item	Description	Quantity	Unit	Total Cost	Unit Last Cost	Stock On Hand	Ave. Cost	Total Cost
04SHZRES7	2004 Reserve Shiraz 11x750ml	372.50	C750	12235.14	32.8460 /	823.00	32.8460	27032.26
Grand Total				12235.14				

Benefit

- Save time.

Stock Operations Reports Stock Movements Summary

Stock On Hand	Ave. Cost	Total Cost
823.00	32.8460	27032.26

Bonded Warehouse Stock-Take GL Postings

When the location is flagged as **Bonded**, stock on hand variances of *bottled items* such as spirits and beers are now posted to the general ledger and excise register.

Ezy-Stock-Take Entry-Ezy Distillery

Snapshot	Quantity	Physical	Stk
Loc. Stock Item Date	On Hand	Count	Var. Unit Upd Grp
DIST 2011RUM7-55% 01/09/2017	38.0000	35.0000	-3 C700 THEF FINS


Lot/Run	Date	Ref.	Quantity	Physical
			On Hand	Count
102	25/04/2017	L17115	38.0000	35.0000

Benefit

- Ensure GL postings occur.

Stock-Take Stock-Take Update

NICK
STS05


Stock-Take Update

10:13 01/09/2017
Page 1 of 1

Sequence : Stock Item

Stock Item	Description	Group	Unit	Unit Cost	GL Stock	GL Adjust
2011RUM7-55%	2011 Rum 55% 700ml	FINS	C700	68.4812	60-080	30-240

Location	Name	Stocktake Date	Unit	Quantity On Hand	Physical Count	Variance	Variance Cost	User
DIST	Distillery Warehouse	01/09/17	C700	38.0000	35.0000	-3.0000	-205.44	NICK

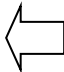
Run Date	Reference	Quantity On Hand	Physical Count	Variance
102 25/04/17	L17115	38.0000	35.0000	-3.0000

Stock Item	2011RUM7-55% Totals	Quantity	Physical	Variance	Variance Cost
		38.0000	35.0000	-3.0000	-205.44

Grand Totals	Quantity	Physical	Variance	Variance Cost	
		38.0000	35.0000	-3.0000	-205.44

GL Interface

Batch	GL A/C	Name	Year	Mth	Amount
123	30-240	Stock - Adjustment	2004/2005	Apr	205.44 DR
123	30-335	Spirit Excise Duty Expense	2004/2005	Apr	1140.26 DR
123	60-080	Stock - Packaged Spirits	2004/2005	Apr	205.44 CR
123	70-085	Spirit Excise Duty Clearing	2004/2005	Apr	1140.26 CR



GL Interface

Batch	GL A/C	Name	Year	Mth	Amount
123	30-240	Stock - Adjustment	2004/2005	Apr	205.44 DR
123	30-335	Spirit Excise Duty Expense	2004/2005	Apr	1140.26 DR
123	60-080	Stock - Packaged Spirits	2004/2005	Apr	205.44 CR
123	70-085	Spirit Excise Duty Clearing	2004/2005	Apr	1140.26 CR

Sales

POSPDA Payment Tab

Payments tab have been introduced so that payment can be recorded at table using a device such as a tablet.

Benefit

- Streamline processing.

EZYPOSPDA

Ezy Wines POS System Interface - POSPDA Payment Tab

Buttons: New Sale, Edit Sale, Waiter Docket, Kitchen Docket, Table No C03, Diners 2, Exit

Header: Table No C03, Diners 2, 14/06/2017 10:57:18

Debtor: ZCUGUN01, Category MSIL, Rewards 210.0, Docket No 552

Sales Rep: LOZ, Enter

Zone: CAFE, Edit

Ezy Wines POS System Interface - POSPDA Payment Tab

Buttons: New Sale, Edit Sale, Waiter Docket, Kitchen Docket, Table No C03, Diners 2, Exit

Header: Table No C03, Diners 2, 14/06/2017 10:57:18

Debtor: ZCUGUN01, Category MSIL, Rewards 210.0, Docket No 552

Sales Rep: LOZ, Enter

Zone: CAFE, Edit

Item Selection Grid:

Red Wines	03 Red 6 Pack
T-Shirt	Hot Drinks
BHV Chardy	Reserve Chardy
Dessert	Vodka
Tips	No of Tastings
Entree	Mains
Voucher	Freight

Ezy Wines POS System Interface - POSPDA Payment Tab

Buttons: New Sale, Edit Sale, Waiter Docket, Kitchen Docket, Table No C03, Diners 2, Exit

Header: Table No C03, Diners 2, 14/06/2017 10:57:18

Debtor: ZCUGUN01, Category MSIL, Rewards 210.0, Docket No 552

Sales Rep: LOZ, Enter

Zone: CAFE, Edit

Payment Summary:

VISA Surcharge	1.30 %
Payment	27.76
Surcharge	0.36
Total Payment	28.12

Apply Surcharge ? Yes No

Ezy Wines POS System Interface - POSPDA Payment Tab

Buttons: New Sale, Edit Sale, Waiter Docket, Kitchen Docket, Table No C03, Diners 2, Exit

Header: Table No C03, Diners 2, 14/06/2017 10:57:18

Debtor: ZCUGUN01, Category MSIL, Rewards 210.0, Docket No 552

Sales Rep: LOZ, Enter

Zone: CAFE, Edit

Item Selection Grid:

Red Wines	03 Red 6 Pack
T-Shirt	Hot Drinks
BHV Chardy	Reserve Chardy
Dessert	Vodka
Tips	No of Tastings
Entree	Mains
Voucher	Freight

Ezy Wines POS System Interface - POSPDA Payment Tab

Buttons: New Sale, Edit Sale, Waiter Docket, Kitchen Docket, Table No C03, Diners 2, Exit

Header: Table No C03, Diners 2, 14/06/2017 10:57:18

Debtor: ZCUGUN01, Category MSIL, Rewards 210.0, Docket No 552

Sales Rep: LOZ, Enter

Zone: CAFE, Edit

Payment Summary:

Pay Type	Tendered	Total Net	47.50
Cash	20.00	Total Tendered	47.50
Visa	27.50	Change	0.00

Void Pay Receipt

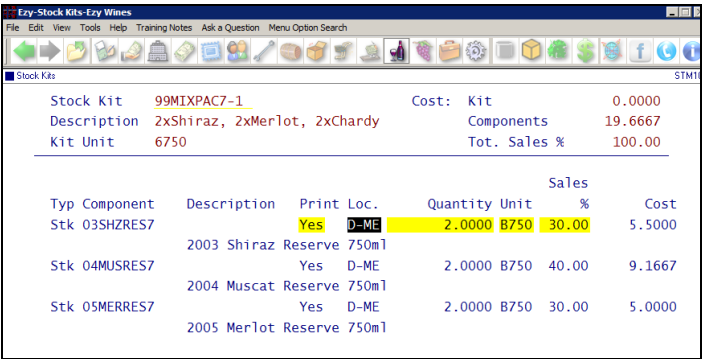
Sales (Cont'd)

POS Stock Kit Location Check

The following system parameter, which defaults to No, determines whether POS checks available stock on hand for the kit or component location.

C/Door: POS, Stock Kits Component Loc.

System parameter “Sales: Stock Kits, Prompt Component Loc.” would also need to be set to Yes.



Stock Kit		99MIXPAC7-1	Cost: Kit	0.0000
Description	2xShiraz, 2xMerlot, 2xChardy		Components	19.6667
Kit Unit	6750		Tot. Sales %	100.00

Typ Component	Description	Print Loc.	Quantity	Unit	Sales %	Cost
Stk 03SHZRES7	2003 Shiraz Reserve 750ml	Yes D-ME	2.0000	B750	30.00	5.5000
Stk 04MUSRES7	2004 Muscat Reserve 750ml	Yes D-ME	2.0000	B750	40.00	9.1667
Stk 05MERRES7	2005 Merlot Reserve 750ml	Yes D-ME	2.0000	B750	30.00	5.0000

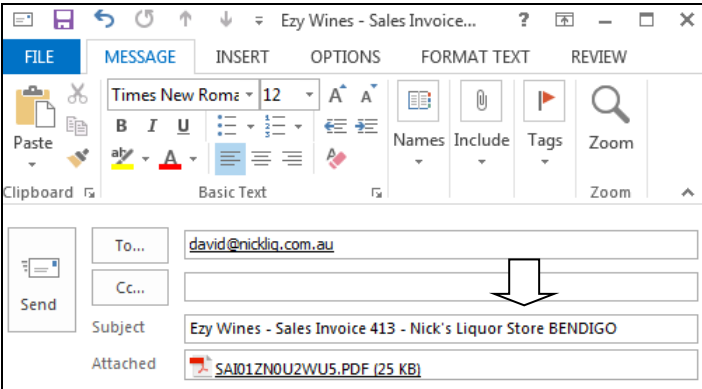
Benefit

- STOCH checking to be for component stock items as opposed to the default location recorded against the kit.

POS
Cellar Door Sales
Cellar Door Sales Update

Sales Invoice Email Subject Inc. Debtor Name

Customer’s name has been appended to the email subject.



Sales Invoices
Sales Invoice Print

Import/Export POS Buttons

New menu options.

Benefit

- Easily manage POS buttons using MS Excel.

Sales Administration
Import POS Buttons
Export POS Buttons

Sales (Cont'd)

NZ Nitro POS Interface

C/Door: POS, Allow Offline Pay

This new system parameter should be set to No.

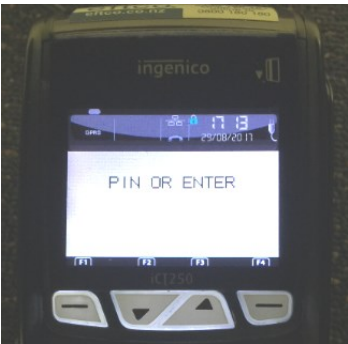
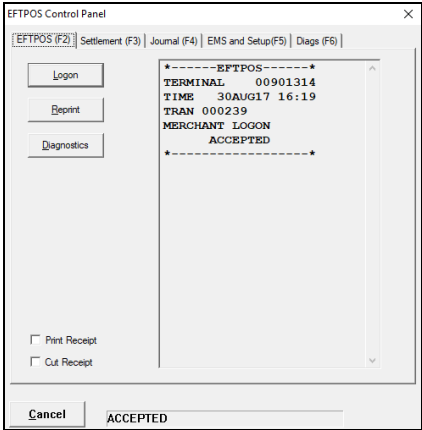
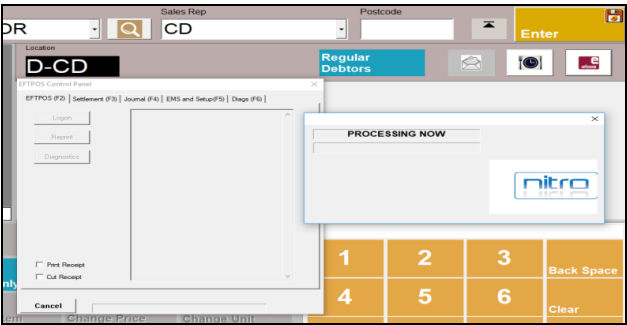
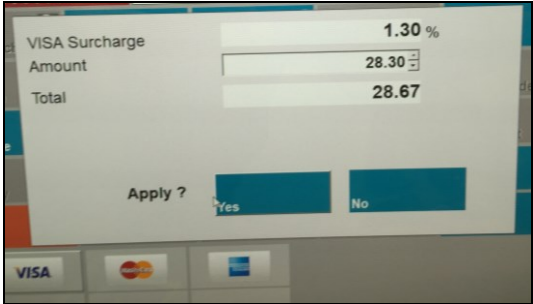
For each user that can access POS, please ensure that the EFTPOS Interface is set to NITRO and EFTPOS Control is set to Yes.

Benefit

- Save time and remove errors.

POS
User Access
User POS Access

Ezy-User POS Access-Ezy Wines			
File Edit View Tools Help Training Notes Ask a Question Menu Option Search			
User POS Access			
User	CDS	Cellar Door Sales	
Access Price	Yes	EFTPOS Interface	NITRO
Access Discount	Yes	C/D Debtor	
Access Modify	Yes	Item Search	Yes
Access Delete	Yes	Def. Table No.	
Default Location		Access Table No.	Yes
Use Barcodes	No	Sales Rep	
Date Change	No	Till Open String	
Today Docs Only	No	Till Open Command	
Totals Only	Yes	AMEX Surch. N/S	
		Visa Surch. N/S	



Docket

Signature

Sales (Cont'd)

Sales Invoice HACCP Interface

If a *wine additive* stock item has also been flagged as *sales*, you will be prompted for the HACCP reference on selling the additive.

Esy-Stock Items-Esy Wines

File Edit View Tools Help Training Notes Ask a Question Menu Option Search

Stock Items

Stock Item	CHSULPHUR	Alias	CHEM
Description	Sulphur		
		Picking Order	
Stock Group	CHEM	Sales Grp	
Re-Order Level	300.0000	HACCP Ref.	Yes
Re-Order Qty	100.0000	Lead Time	120
Cost - Std	0.0000	KG	
- Ave *	20.3748	KG	
- Last	20.3748	KG	
WET Payable	No	WET Rebate	No
WET Blended	No	Discount	Yes
GST Supply	Taxable - 10.00%		
GST Acq.	Other - 10.00%		
GL Accounts:	WET		
Stock	60-061	Sales	10-040
C.O.G.S	20-040	Disc 1	
Adjust.		Disc 2	
		Alcohol Type	
		ABS Class	
		Areas Of Use:	
		Sales	Yes
		Packaging Spec.	No
		Packaging Material	No
		Bulk Wine/Juice	No
		Wine Additive	Yes
		Purchase Orders	Yes
		Plant Servicing	No
		Vineyard Operation	No

Benefit

- Ensure that HACCP STO is up-to-date.

Sales Invoices
Sales Invoice Entry
Sales Invoice Listing
Sales Invoice Update
Sales Invoice History

Esy-Sales Invoice Entry-Esy Wines

File Edit View Tools Help Training Notes Ask a Question Menu Option Search

Sales Invoice Entry

Invoice No	415	Date	30/08/2017	Gross	\$	25.00
Debtor	MIRAND01	Price Type	Retail	WET	\$	0.00
Miranda Wines Griffith		WET	Yes	GST	\$	2.27
Reference	DAVE	Cartons	0	Net	\$	25.00

Typ Code	Quantity	Unit	Locn	Price	Disc 1	Disc 2	GL/Net
Stk CHSULPHUR	10.0000	KG	WWC1	2.50	0.00 %	0.00	\$
20 CHEM Sulph			HACCP Ref. LOT#12.12.2010	0.00		0.00	25.00

NICK SAI03

11:51 31/08/2017 Page 1 of 1

Sequence : Invoice No

Selection Criteria From To Invoice No 415 415

Sales Invoices Listing

Invoice	Date	Debtor	Name	Reference	Sales Rep	Carrier	A.B.N.	Order No
415	30/08/17	MIRAND01	Miranda Wines Griffith	DAVE	NICK	MCFREE	60-123-123-123	

Stock Item	Description	Quantity	Unit	Locn	Price	Disc 1	Disc 2	GL/Net
CHSULPHUR	Sulphur	10.0000	KG	WWC1	2.50	0.00	0.00	25.00
	HACCP Ref. LOT#12.12.2010							

Invoice No	415	Totals			0.00	0.00	2.27	25.00
Grand Totals					0.00	0.00	2.27	25.00

GL Interface (Listing Only)

Batch	GL A/C	Name	Year	Mth	Amount
135	10-040	Sales - General/Merchandise	2004/2005	Apr	22.73 CR
135	20-040	COGS - General/Merchandise	2004/2005	Apr	203.75 DR
135	60-020	Domestic Debtors Control	2004/2005	Apr	25.00 DR
135	60-061	Stock - Dry Goods	2004/2005	Apr	203.75 CR
135	70-070	GST Supply Clearing	2004/2005	Apr	2.27 CR

Sales R.W. Includes VAT and Excise (UK & EU)

The following parameters have been introduced.

- Sales Report Writer: Cost Includes Exc.
- Sales Report Writer: Cost Includes VAT
- Sales Report Writer: Value Includes Exc.
- Sales Report Writer: Value Includes VAT.

Sales Report Writer
Sales Report Generation
Sales Report Generation Batch
Sales Report Export Batch

Sales (Cont'd)

Restrict Sales Entry Taxes Access

Specify which users can change tax setting recorded against a Debtor when entering a sale.

Ezy-User Sales & Language Access-Ezy Wines

File Edit View Tools Help Training Notes Ask a Question Menu Option Search

User Sales & Language Access

User

NICK

Nick Cugura

Sales Entry:

Access Price

Yes

Access Disc 1

Yes

Access Modify

Yes

Access Delete

Yes

Default Location

Access Location

Yes

Access Sales Rep

Yes

Access WET Pay

Yes

Apply S/Orders

No

Access Disc 2

Yes

Access D2 Type

Yes

Benefit

- Restrict whether user can change the default WET/Excise setting recorded against Debtor's profile
- Ensure sale prices are correct!

User Access
User Sales & Language Access
User Access Summary
Sales
Sales Order Entry
Sales Invoice Entry

Australia

NZ-User Sales & Language Access-New Zealand Wines

File Edit View Tools Help Training Notes Ask a Question Menu Option Search

User Sales & Language Access

User

LORRAINE

Lorraine

Sales Entry:

Access Price

Yes

Access Disc 1

Yes

Access Modify

Yes

Access Delete

Yes

Default Location

Access Location

Yes

Access Sales Rep

Yes

Access Excise

Yes

Apply S/Orders

Yes

Access Disc 2

Yes

Access D2 Type

Yes

New Zealand

NZ-Sales Invoice Entry-New Zealand Wines

File Edit View Tools Help Training Notes Ask a Question Menu Option Search

Sales Invoice Entry

Invoice No

10110

Debtor

PHILLB01

[F5]

Phillips Cafe

Alias

CAFE

12 View Street

Invoice Date

07/09/2017

Hastings

Order No

4122

Order Date

07/09/2017

Delivery Address:

Phillips Cafe

Reference

12 View Street

Carrier

DAILYFRE

Hastings 4122

Carrier Ref.

Despatch Date

07/09/2017

00:00

Cartons

0

Terms/Due

30DE

30/10/2017

Sales Rep

LORRAINE

Type

MAIL

Excise Payable

Yes

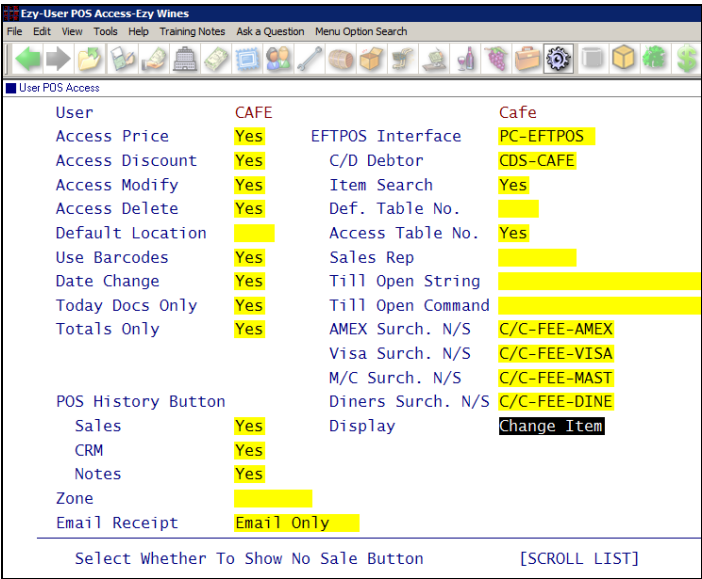
GST Type

15.00%

Sales (Cont'd)

POS Change Item

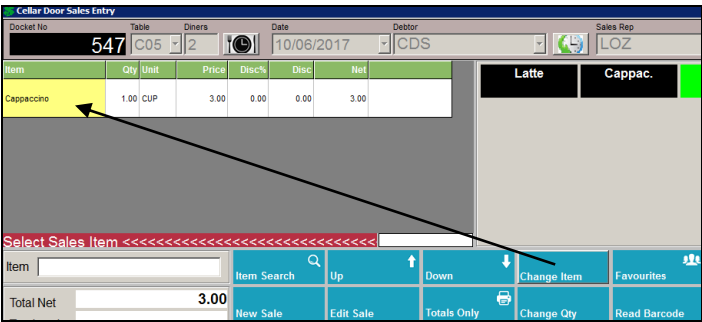
Specify which users can change an item.



Benefit

- Ability to change an entry rather than have to delete and insert a entry
- Ensure that the change remains on the same line.

POS
User Access
User POS Access



Benefit

- Don't apply discount structures against wine club members!

Wine Club
Mail Order Docket Generation
Mail Order Packs Confirm Email

M/Order: Packs, Generation To Calc. Disc

New system parameter that determines whether the wine club orders generated apply discounts that have been setup against the members. It defaults to Yes.

The same will apply to the confirmation email sent to members prior to despatching the wine.

Change POS Button Number

Any button number on the main menu or sub-menus can now be changed.

Sales Reference Maintenance
POS Buttons

Sales (Cont'd)

Additional Sales Reference

The following system parameter, which default to No, determines whether you can record a second reference when recording a sale.

Sales: Entry, Additional Reference.

Ezy-Sales Order Entry-Ezy Wines

File Edit View Tools Help Training Notes Ask a Question Menu Option Search

■ Sales Order Entry

Order No	165.00	COLES Distribution Centre
Debtor	COLES001	100 James Rd
Alias		South Melbourne
Order Date	20/09/2017	VIC 3000
Sales Rep	LOZ	Delivery Address
A.B.N.	123456789	COLES Distribution Centre
WET Payable	Yes	100 James Rd
Reference	COLES#1123	South Melbourne
Carrier Ref.	MCP#112	VIC 3000
Carrier	MCPHEE Type MAIL	No Of Cartons
Despatch Date	20/09/2017	Required
Price Type	Wholesale	Total
Promotion	NONE	Current
Bill To	COLES001	30 Days
Credit Rating	GOOD Limit	60 Days
Terms	30DE	90 Days
		Exported
		Add. Ref.

Benefit

- Could be utilised to record an event or a distributor's customer reference.

Sales Invoices
Sales Invoice Entry
Sales Invoice Listing
Sales Invoice Print
Sales Invoice History
Sales Orders
Sales Order Entry
Sales Order Listing
Sales Order Print
Sales Order Confirmation
Sales Order History
System Administration
Stationery Designer

Sequence Stock Allocations By Sales Area

Sequence has been to the selection criteria. Current and unupdated can now also be reported.

NICK SAX64

BIG HILL VINEYARD

12:53 21/09/2017 Page 1 of 1

Stock/Sales Area Allocations

Sequence : Sales Area

Sales Area	Stock Item	Description/Name	Unit	Original	Current	Hold	To Date	Unupdated	Sales	Balance
NSW	02CHARRS7	New South Wales 2002 Chard Reserve 12x750ml	C750	400.0000	392.0000	0.0000	6.0000	0.0000	396.0000	
	02MERRES7	2002 Merlot Reserve *MO DISC* 12x750ml (Printed Carton)	C750	1111.0000	0.0000	0.0000	0.0000	0.0000	0.0000	
	03MERRES7	2003 Merlot Reserve 750ml	C750	200.0000	98.0000	0.0000	0.0000	0.0000	98.0000	
	03SHIRAS7	2003 Shiraz Reserve 750ml	C750	1.0000	399.0000	0.0000	0.0000	0.0000	399.0000	
Sales Area NSW	Totals			1712.0000	889.0000	0.0000	6.0000	0.0000	883.0000	
QLD	03MERRES7	Queensland 2003 Merlot Reserve 750ml	C750	1.0000	1.0000	0.0000	0.0000	0.0000	1.0000	
Sales Area QLD	Totals			1.0000	1.0000	0.0000	0.0000	0.0000	1.0000	
UK	02MERRES7	United Kingdom 2002 Merlot Reserve *MO DISC* 12x750ml (Printed Carton)	C750	100.0000	80.0000	0.0000	0.0000	0.0000	80.0000	
	02SHIRAS7	2002 Shiraz Miranda (Storage)	P750	0.1719	0.0938	0.0000	0.0000	0.0000	0.0938	
Sales Area UK	Totals			100.1719	80.0938	0.0000	0.0000	0.0000	80.0938	
VIC	03MERRES7	Victoria 2003 Merlot Reserve 750ml	C750	1.0000	1.0000	0.0000	17.5001	0.0000	-16.5001	
	03SHIRAS7	2003 Shiraz Reserve 750ml	C750	2.0000	600.0000	0.0000	2.8335	0.0000	597.1665	
	04SHIRAS7	2004 Reserve Shiraz 12x750ml	C750	100.0000	50.0000	0.0000	150.3331	130.0000	-230.3331	
Sales Area VIC	Totals			103.0000	651.0000	0.0000	170.6667	130.0000	350.3333	
	Sales Inc. Transfers -			31.0000						

Benefit

- Check customer allocations by sales area.

Sales Analysis Reports Stock/Sales Area Allocations

NICK SAX64

BIG HILL VINEYARD

Stock/Sales Area Allocations

Stock Item 2002 Chard Reserve 12x750ml

Unit Dozen - 12 x 750ml Bottles

Location Group	Labelled	Unlabelled	Bulk	Total
Bendigo	417	0	0	417
Other Domestic Warehouses	351	0	0	351
Winery in Adelaide	33	0	22	55
Winery in Bendigo	159	0	2915	3074
Winery Warehouse 1	2008	0	0	2008
STOCK ON HAND TOTAL				5905
ALLOCATION BALANCE TOTAL				0
AVAILABILITY				5905

Mail Order: Update, Complete Batch Only

When this new system parameter is set to Yes, the Update will only succeed when *all* entries can be updated.

Benefit

- Avoid partial update of a mail out.

Wine Club
Mail Order Sales Update

Sales (Cont'd)

Foodstuffs EDI - NZ

The following system parameters need to be set.

Sales: Entry, Prompt for EDI Status

Set this system parameter to Yes.

Sales Orders: EDI Vendor Code

Sales Orders: EDI Default Order Type

Acc/Rec: Foodstuffs Codes On Del. Adr.

Acc/Rec: Rec. Imp. Foodstuffs SI Debtor

Stock: Export Stock Item Details Format

Set this system parameter to 8 for Foodstuffs.

NZ Debtors-New Zealand Wines

File Edit View Tools Help Training Notes Ask a Question Menu Option Search

Debtor: **NWBLEN01** Alias: **NEWWORLD**

Name: **New World Blenheim**

Add. Phone: [Redacted]

Add. A/C Email: [Redacted]

Credit Card Defaults:

Card Type: **None** Card Number: [Redacted] Expiry: **0/0**

Card Name: [Redacted]

Cheque Defaults:

Bank: [Redacted] Branch: [Redacted]

Drawer: [Redacted]

EDI Details:

EDI Type: **FSSI**

Vendor Code: **FS101** Alternate: [Redacted]

Head Office Id: **FS001** Alternate: [Redacted]

Store Code: **NW033**

System Parameters & System Information - Internet Explorer

E:\Dev\master\tmp\sysi-NICK.htm

SALES: ENTRY, PROMPT FOR EDI STATUS : YES

MENU OPTIONS IMPACTED

Import Debtor Details
Export Debtor Details
Debtors
Debtors
Export Sales Allocations
User Sales & Language Access
Import Sales Dockets
Sales Credit Note Entry
Sales Credit Note UPDATE
Sales Invoice Entry
Sales Invoices UPDATE
Sales Order Entry
Sales Orders CONFIRMATION
Export Stock Item Details
Export Stock Item Prices
Export Stock Item Balances
Export Stock Location Details
Stock Items
Stock Locations
Stock Locations
System Log Listing

Benefit

- Streamline Foodstuffs transactions
- Eliminate wasteful, redundant and error-prone data entry.

Export Debtor Detail

Export Sales Allocations

Export Stock Items Prices

These options can be scheduled to run periodically




Sales (Cont'd)

Excise Register Location Selection

Location has been added to the selection criteria.

NICK
SAA84



12:43 21/09/2017
Page 1 Of 1

Excise Duty Register History


Date	Source	Ref.	Debtor	Stock Item	Description	Tariff	Loc.	Quantity	Unit	LALS	Duty
Return Period End / / Return Reference 21213 1133											
01/05/17	Invoice	415	VINTNE01	2011RUM7-55%	2011 Rum 55% 700ml	3.2	DIST	240.00	B700	92.400	7601.75
Bonded Totals										92.400	7601.75
Unbonded Totals										0.000	0.00
Return Totals										92.400	7601.75
Bonded Totals											
Unbonded Totals										0.000	0.00
Grand Totals										92.400	7601.75
Tariff LALS Duty Rate Duty											
3.2 92.400 82.27 7601.75											



Spirit Credit Note Excise

Excise added defaulting to No. *Excise is generally not credited on processing a credit note sale.*

NICK
SAR10



Credit Note Reasons

Reason	Description	Default	Update Stock	Update Analysis	Update Excise	Active
DAMA	Goods Damaged - No Return	No	No	No	No	Yes
DARE	Goods Damaged - Returned	No	No	Yes	No	Yes
ERRO	Error Goods Didn't Leave Bond	No	Yes	Yes	Yes	Yes
INCO	Incorrect Supply	Yes	Yes	Yes	No	Yes
REBA	Liquor Store Rebate	No	No	Yes	No	Yes


POS Zone Printer

Printer(s) can now be recorded against zones.

Please note that POS will always use the printer specified here!

Ezy-POS Zones-Ezy Wines

File Edit View Tools Help Training Notes Ask a Question Menu Option Search



POS Zones

Zone	Name	Diners
CAFE	Cafe	52
Printer Name		
CBAR	Cafe - Bar Printer	

Benefit

- Track transfer where the stock is sold export and excise is claimed back.

Stock Movements
Stock Transfers Update
Sales Administration
Excise Duty Register
Excise Duty Register History

Benefit

- Ensure excise statutory requirements are met!

Sales Reference
Credit Note Reasons
Sales Credit Notes
Sales Credit Note Update

Benefit

- Ensures that you only print receipts on your zone printer.

POS
Sales Reference
POS Zones